

MATH



CHAPTER 8: GEOMETRICAL SHAPES

GEOMETRICAL SHAPES

➤ INTRODUCTION

Geometrical Shapes

In this chapter, we will know about the basic geometrical shapes, which we often see around us.

❖ Line

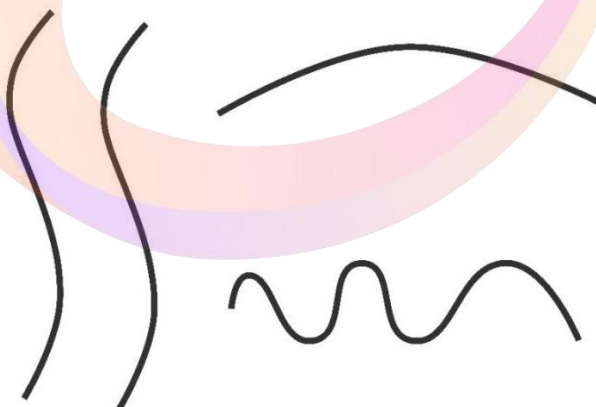
A line is a collection of points. The lines may be straight or curved.

See the picture of lines given below:

❖ Straight lines



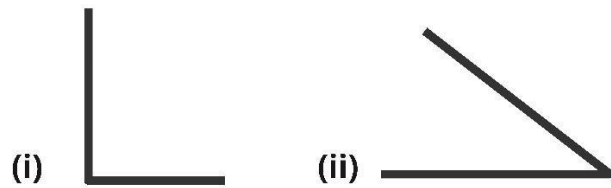
❖ Curved lines



Angles

When two lines meet at a point, an angle is formed.

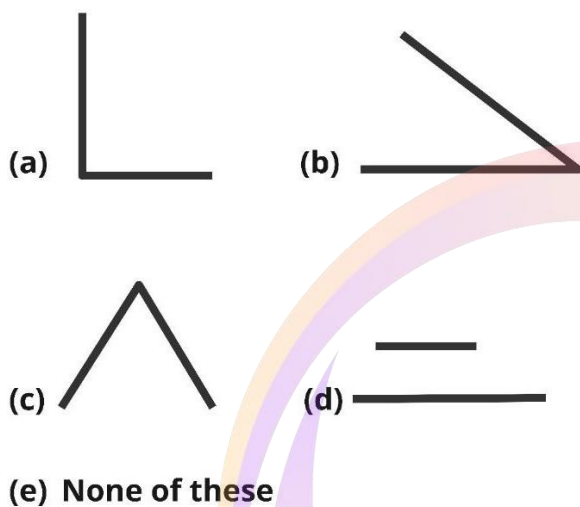
See the following figures:



These are angles.

Example:

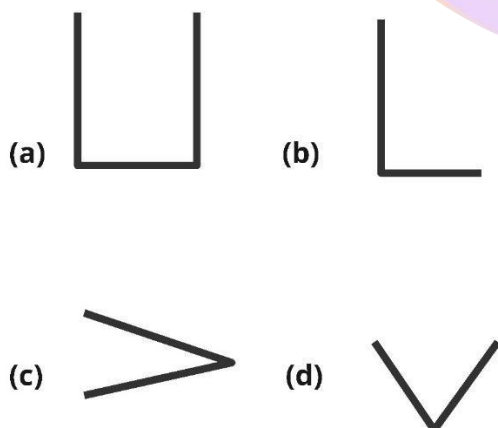
Which one of the following is not an angle?



Answer- (d) **Explanation:** Option (d) is correct because in (d), two lines do not meet to make an angle.

Example:

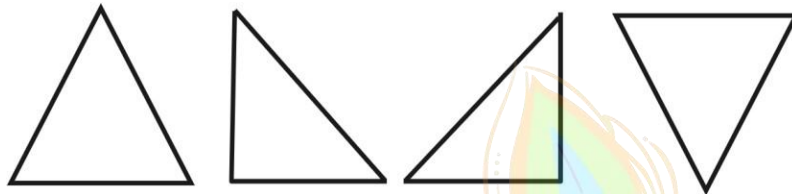
Which one of the following options has two angles?



Answer- (a) **Explanation:** Option (a) is correct because it has three lines meeting at two points making 2 angles.

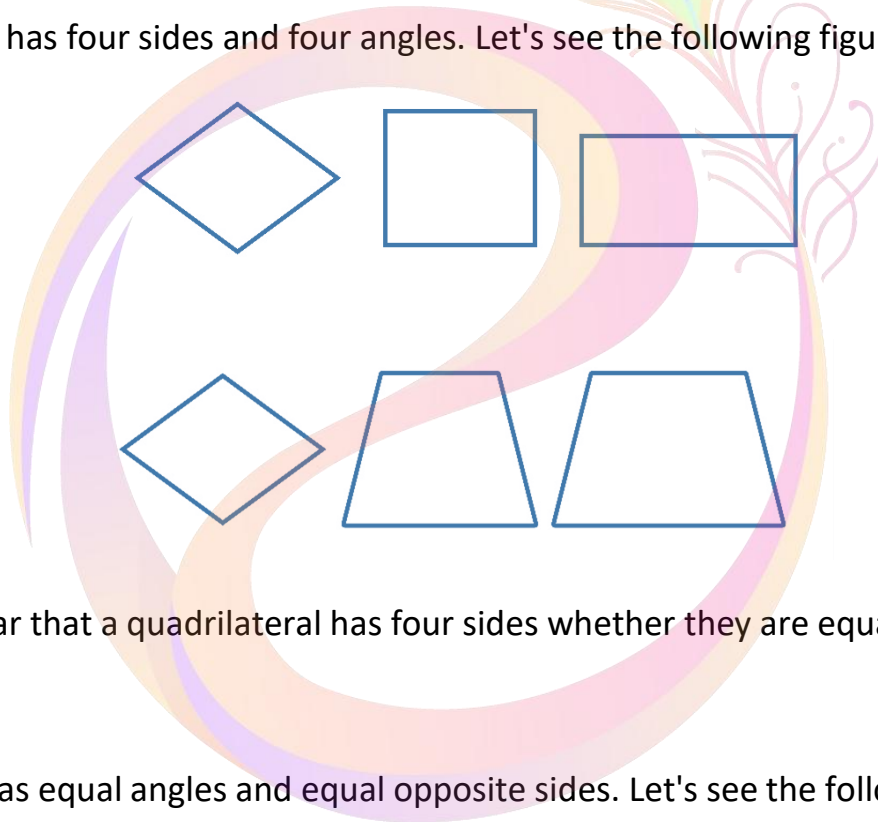
Triangle

A triangle has three sides and three angles. Let's see the following figures:



Quadrilateral

Quadrilateral has four sides and four angles. Let's see the following figures:



Thus, it is clear that a quadrilateral has four sides whether they are equal or not.

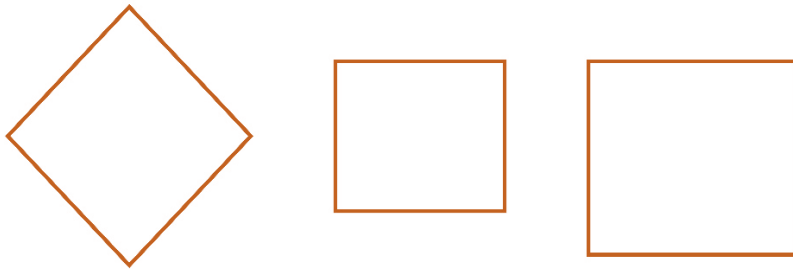
Rectangle

A rectangle has equal angles and equal opposite sides. Let's see the following rectangles:



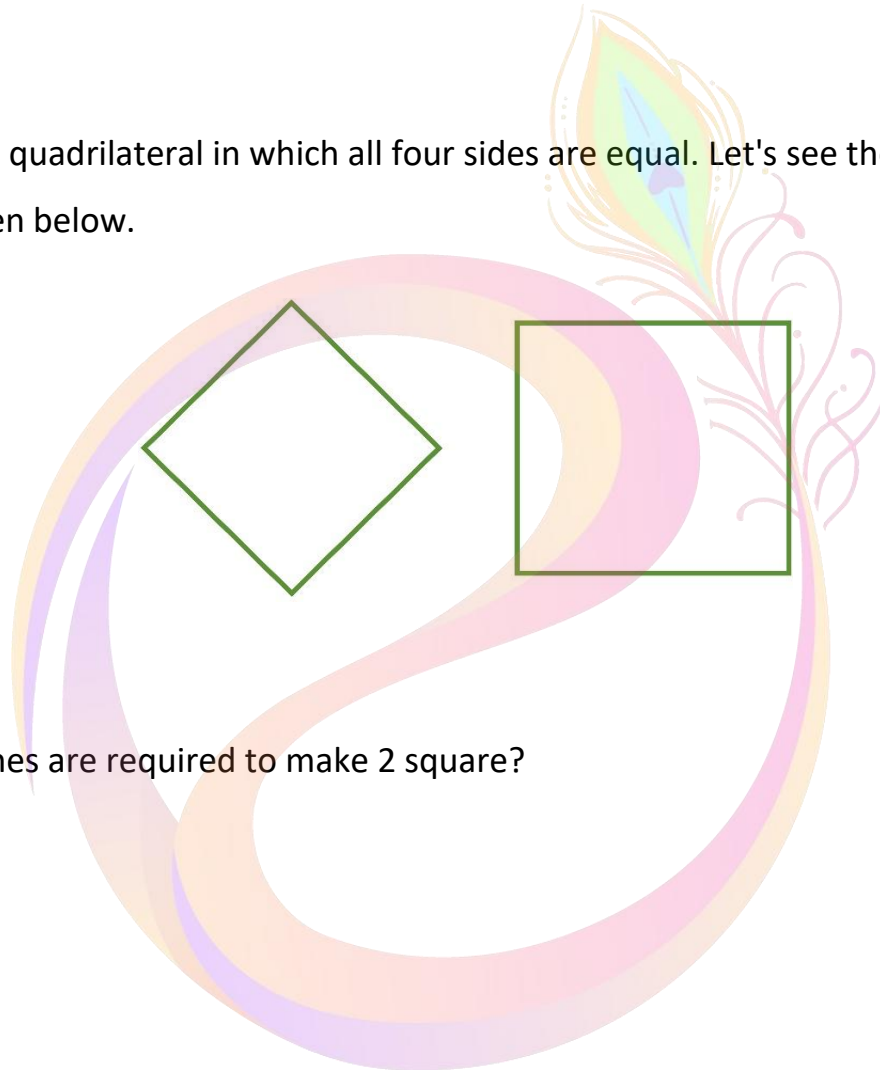
Square

Square has 4 equal sides and 4 angles. Let's see the squares given below:



Rhombus

Rhombus is a quadrilateral in which all four sides are equal. Let's see the pictures of rhombus given below.



Example:

How many lines are required to make 2 square?

- (a) 4
- (b) 8
- (c) 12
- (d) 3
- (e) None of these

Answer- (b) **Explanation:** Option (b) is correct because one square has [4] lines.

So, $[4] + [4] = [8]$ lines are required to make [2] squares.

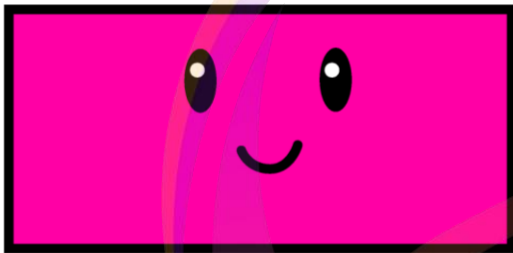
Questions:

1. Identify the shape?



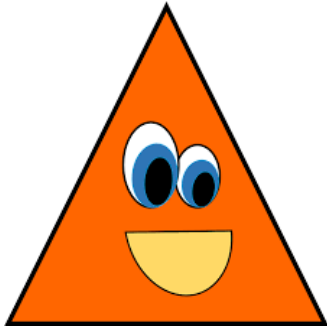
- (a) oval
- (b) circle
- (c) triangle
- (d) sphere

2. A Rectangle has:



- (a) Four equal sides
- (b) Three equal sides
- (c) Five equal sides
- (d) Two equal sides

3. How Many Sides have a triangle.



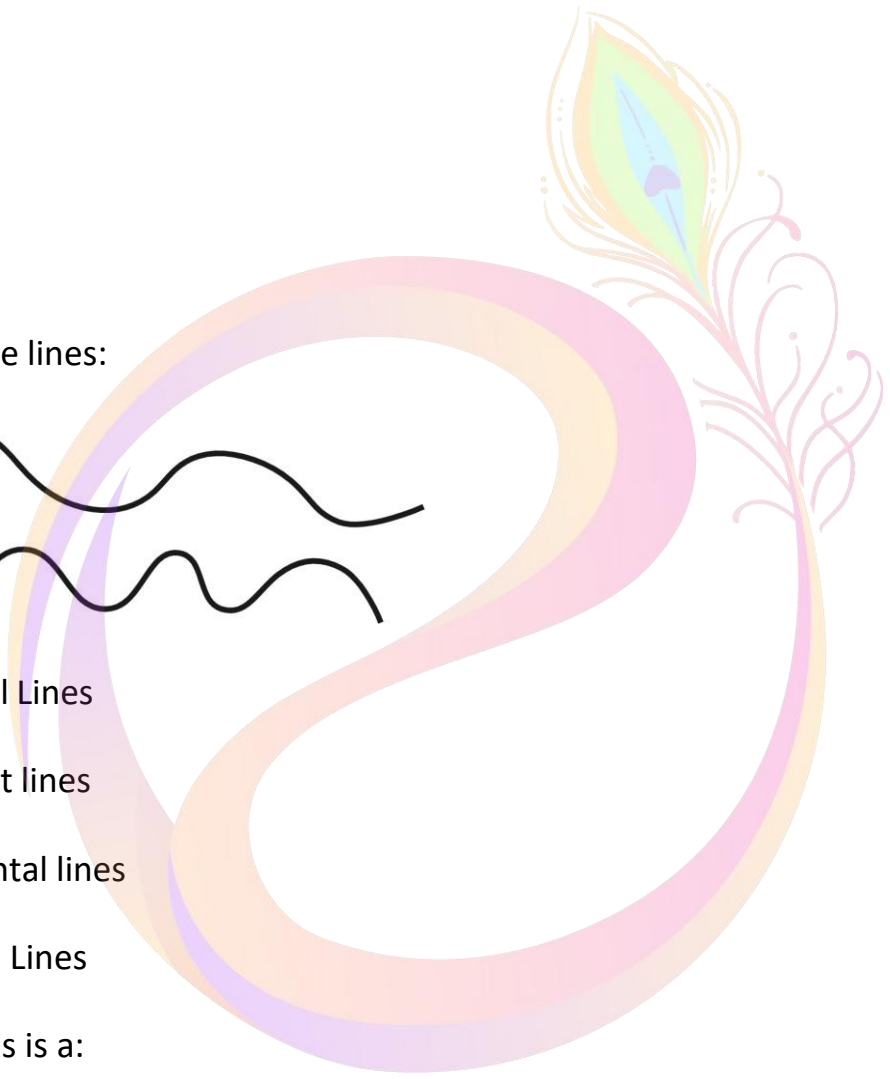
- (a) 1 Side
- (b) 2 Sides
- (c) 3 Sides
- (d) 4 Sides

4. Identify the lines:



- (a) Vertical Lines
- (b) Straight lines
- (c) Horizontal lines
- (d) Curved Lines

5. A Rhombus is a:



- (a) Quadrilateral
- (b) Triangle
- (c) Square
- (d) Circle

6. How Many Lines are required to make a square



- (a) 4 Lines
- (b) 3 Lines
- (c) 2 Lines
- (d) 1 Line

Answer-

- 2:** (b)
- 3:** (c)
- 4:** (d)
- 5:** (a)
- 6:** (a)